

13th Annual Conference on South Asia



November 2, 3, & 4, 1984
Madison, Wisconsin

D. Knipe

THE THIRTEENTH ANNUAL CONFERENCE ON SOUTH ASIA

NOVEMBER 2, 3, & 4, 1984

Lowell Hall
610 Langdon Street
University of Wisconsin
Madison, Wisconsin 53706

Sponsored by
SOUTH ASIAN AREA CENTER
University of Wisconsin-Madison

PROGRAM COMMITTEE

V. Narayana Rao (Chairperson)
University of Wisconsin-Madison

James Warner Bjorkman
University of Wisconsin-Madison

Muhammad U. Memon
University of Wisconsin-Madison

G. M. Naidu
University of Wisconsin-Whitewater

Krishna Pradhan
University of Wisconsin-Madison

Frances Wilson
University of Wisconsin-Madison

Abbie Ziffren
University of Wisconsin-Madison

Judy Patterson (Conference Coordinator)
University of Wisconsin-Madison

CONFERENCE NOTES

SPECIAL NOTE: This is your copy of the Conference program. Please bring it with you when you come. Additional programs are \$1.00 at the Conference. Thank you.

CONFERENCE REGISTRATION: Please be sure to register — all participants and attendees, including students. Pick up Conference materials at the Registration Desk in the Main Lounge Area at Lowell Hall. Persons participating on Friday morning panels are asked to check in at the Registration Desk as soon as their panels are over.

PANEL LOCATION: Panels and other events are being held in Lowell Hall Conference Headquarters, Wisconsin Center, & the Memorial Union, 610, 702 & 800 Langdon Street respectively. For panels meeting in the Memorial Union, enter the building through the Langdon Street entrance nearest the Red Gym. The panel/meeting rooms are on the 3rd floor of the Commons Wing. Please check the program booklet carefully for location assignments.

PRESENTATION OF PAPERS: Papers will be presented on each panel in the order listed in the program booklet. All panelists for each panel are asked to report to the panel chairperson at the beginning of the appropriate Panel Session.

THE CONFERENCE OFFICE is Room 115 Lowell Hall; phone number 263-2986. The Office will be open from 8:00 a.m. to 5:00 p.m. November 2 & 3, and from 9:00 a.m. to 1:00 p.m. on November 4.

TEACHING WORKSHOPS: Three workshop/panels for K-12 classroom teachers are scheduled & may be identified by the words "Teaching Workshop" preceding each title in the program booklet. All Conference attendees are invited to attend and participate in discussion. A Language Teaching Panel (Session #35) is geared to K-12 teachers as well as college instructors. A film & live demo, which are part of the panel, will be of special interest to K-12 teachers.

VIDEO TAPES: A variety of videocassette tapes are available for viewing in Room 426, Lowell Hall, on Saturday, November 5, (see page 21).

FILM SHOWINGS: Documentary films will be shown continuously all day Saturday in the Wisconsin Center Auditorium (see page 15).

INVITED LECTURE: Gananath Obeyesekere will present a special invited Lecture on Friday evening at 8:00 (see page 20).

FEATURED SPEAKER: H.E. K.S. Bajpai, Ambassador of India, will speak at 1:00 on Saturday afternoon (see page 28).

CULTURAL PERFORMANCE: An Evening of North Indian Classical Music & Dance will be presented at 8:00 p.m. Saturday, November 3, in the Wisconsin State Historical Society Auditorium (see page 35).

SPECIAL PRESENTATION: A vocal performance will be presented by Manindra K. Verma from 9:00 to 10:00 a.m. in Room B-1, Lowell Hall on Sunday, November 4 (see page 36).

SLIDE/LECTURE: Thomas R. Metcalf will present "Princes, Artisans, & Architects: Colonial Building in Princely India, 1850-1930" at 12:00 noon on Friday, November 2, in the Lower Lounge at Lowell Hall (see page 14).

DANCE PRESENTATION: Parul Shah will present a program of Bharata Natyam from 12:15 to 1:00 p.m. in Room B-1, Lowell Hall, on Friday, November 2 (see page 14).

THE CORNERSTONE: Lowell Hall's weekday cafeteria, will be open for lunch service on Friday, November 4, from 11:30 to 12:30 in the Dining Room on the Lower Level. Friday features will be *Chole & Cucumber Raita*. Conference attendees are welcome to have lunch there.

NEPALI POTLUCK BUFFET DINNER: Madison students and faculty members of the Nepal Studies Association invite those interested in Nepal to a potluck dinner on Saturday evening, November 3, at 6:30 at Union South. Check the "Today in the Union" board for exact room assignment. Madisonians are asked to bring their favorite dish to pass for 20 or more (rice, curry, meat, salad, dessert). Guests, come as you are. Contact Conference Office for further details.

TIBETAN DINNER: November 3, 6:30 p.m., Rosewood Room, Memorial Union. For those who wish to meet and share ideas. Sign up in Conference Office before 2:00 p.m. Saturday.

ANCILLARY GROUP MEETINGS: The Nepal Studies Association is again meeting in conjunction with the Annual Conference & will hold a business meeting Friday noon (see page 14).

The Committee on South Asian Women (COSAW) will hold a meeting on Friday at 12:00 Noon in the Beefeaters Room at the Memorial Union to exchange information. The Madison COSAW chapter is hosting the meeting. Current & prospective members are welcome.

The Nepali 'Gyana-Goshthi' will meet in Room 138 Wisconsin Center on Saturday at 10:15 a.m. Krishna Pradhan is the organizer.

The Society for Asian Cinema Studies will hold an open meeting Friday noon (see page 14). Mira Reym Binford is the organizer.

The Rajasthan Studies Group will hold a meeting at 2:00 Saturday afternoon in Room 138, Wisconsin Center.

The Afghan Interest Group will hold a special luncheon meeting at 12:00 noon on Saturday, Nov. 3, in the Lower Lounge, Lowell Hall. Howard S. Goldman is the Coordinator.

Festival of India Information Presentations will be held at 10:15 a.m. Saturday & at 4:00 p.m. Saturday. Indo-U.S. Subcommission on Education & Culture members will be present to answer any questions & to discuss the various events planned for the Festival Year. Meetings open to all interested persons. (See pp. 27 & 34).

FILM: A screening of Mani Kaul's film *Sataha Sa Uthata Admi* will follow panel Session 25 Saturday morning (see p. 24). Handouts will be available as the film has no subtitles.

Conference Notes continued on page 4—

DISPLAYS:

"Women of Pakistan", a photographic exhibit by Dr. Linda Mather, New Jersey Dept. of Higher Education, will be on display through-out the Conference in the Main Lounge Area of Lowell Hall. The exhibit is a COSAW-related activity.

"Portraits from Gangwa: A Rajasthani Village in the Aravallian Hills" is a photographic exhibit by Gail Wread, Berkeley, with the commentary by Thomas Rosin, Sonoma State University. It will be on display in Lowell Hall's Main Lounge Area throughout the Conference.

"Pakistan: Traditions in Crafts" is an exhibit of brass, wood & onyx work, & wall hangings, photos, posters & costumes of Pakistan. Sponsored by the Pakistan Students Association of Univ of Wis-Madison, the exhibit will also feature a continuous slide show, "Journey Through Pakistan" (from Pakistan Tourism Development Corp.) on Saturday. The exhibit will be on display during Conference hours in the Lower Lounge at Lowell Hall. Documentary films on Pakistan are available in the film room on Saturday in conjunction with this exhibit.

Books & educational materials are on display in Rooms 115, 116 & 117 Lowell Hall, & in the Lower Lounge from: South Asian Area Center, Southeast Asian Center, South Asia Books, Asian Humanities Press, Motilal Banarsidass, The Asia Society, COSAW, Amerikannada, Hemisphere Magazine, Humanities Press, Inc., The Riverdale Co. Publishers, The Toronto South Asian Review, Princeton Univ Press, The Scholar's Choice, ACM Urban Education Program, & others.

WORKSHOPS:

Changing Division of Labor in South Asia Workshop is being held on Thursday, November 1 & Friday, November 2, in conjunction with the 13th Annual Conference. The workshop sessions are in Room 118, Lowell Hall. Organizers are James Warner Bjorkman, T. Scariett Epstein & Kusum Nair. See pages 10-11.

Ethnosociology & Related Approaches to Indian Culture workshop is being held on Thursday, November 1 in Room 226, Wisconsin Center. The Thursday workshop is being held just for the participants on the Friday morning panel of the same name. The Friday panel is open to all. Michael Moffatt is the organizer of the workshop & chair of the panel. See page 12.

Workshop on the Social History & Relations of Money in South Asia is being held Friday afternoon, November 2, as part of the 13th Annual Conference. Nicholas B. Dirks & Stewart Gordon are the organizers. See pages 17 & 19.

Workshop on the Practical Art of Literary Translation is being held Sunday morning, November 4, as part of the Conference. Hank Heifetz is the organizer. It will be held in Roundtable style & is open to all interested persons. See page 39 for full details.

ABBREVIATION: WISAAC refers to Wisconsin South Asian Area Center.

INDEXES: See back of this program book for Index of Panels (pp. 41-43) & Index of Participants (pp. 44-47).

THE CENTER FOR AFGHANISTAN STUDIES

The Center for Afghanistan Studies, University of Nebraska at Omaha, is observing its 10th anniversary at the 13th Annual Conference. In conjunction with this, two panels are being held:

The Potential of Afghanistan's Society & Institution to Resist Soviet Domination

Afghanistan Update: The Refugee & The Resistance

The Center is the only institutional base in the U.S. specifically & exclusively concerned with Afghanistan affairs. Thomas E. Gouttierre is the Center Director.

Two videotapes on Afghanistan are available for viewing in the tape room (see page 21) from the Center at Omaha in conjunction with the panels. See the flyer in your registration packet for further information and history.

مرکز افغانستان شناسی

SCHEDULE OF EVENTS

Thursday, November 1:

WORKSHOPS:

The Changing Division of Labor in South Asia (see pages 10-11)
Ethnosociology & Related Approaches to Indian Culture (see page 4)

Friday, November 2:

9:00 am

REGISTRATION, Lowell Hall, Main Lounge Area (Coffee & Tea)

9:00 - 11:45 am

PANEL SESSIONS 1-4, Lowell Hall & Memorial Union, pp. 12-13

12:00 - 1:00 pm

LUNCH BREAK: See page 14 for meetings & events during this time

1:15 - 3:00 pm

PANEL SESSIONS 5-11, Lowell Hall & Memorial Union, pp. 16-17

3:00 - 3:15 pm

BREAK

3:15 - 5:00 pm

PANEL SESSIONS 12-18, Lowell Hall & Memorial Union, pp. 18-19

5:00 - 6:00 pm

SOCIAL HOUR, Lowell Hall, Main Lounge Area, Cash Bar, (see page 20)

6:00 - 7:30 pm

ALL CONFERENCE DINNER, Lowell Hall Dining Room (Lower Level) (see page 20)

8:00 pm

INVITED LECTURE: Gananath Obeyesekere Room B-1, Lowell Hall (see page 20)

Saturday, November 3:

8:00 am

REGISTRATION, Lowell Hall, Main Lounge Area (Coffee & Tea)

8:15 - 10:00 am

PANEL SESSIONS 19-26, Lowell Hall & Wisconsin Center, pp. 22-24

10:00 - 10:15 am

BREAK

10:15 - 12:00 N

PANEL SESSIONS 27-33, Lowell Hall & Wisconsin Center, pp. 25-27

12:00 - 1:00 pm

ALL CONFERENCE LUNCHEON, Lowell Hall, Dining Room (see page 28)

1:00 pm

FEATURED SPEAKER: H.E. K.S. Bajpai Room B-1, Lowell Hall (see page 28)

2:00 - 3:45 pm

PANEL SESSIONS 34-41, Lowell Hall & Wisconsin Center, pp. 29-31

3:45 - 4:00 pm

BREAK

4:00 - 5:45 pm

PANEL SESSIONS 42-49, Lowell Hall & Wisconsin Center, pp. 32-34

6:00 - 7:00 pm

SOCIAL HOUR, Lowell Hall, Main Lounge

8:00 pm

PERFORMANCE: Christopher Ris & Marni Wieser Ris, Wis Historical Society Aud (see page 35)

Sunday, November 4:

8:30 am

SOCIAL HOUR, Lowell Hall, Main Lounge Area (Coffee & Tea & Muffins)

9:00 - 10:00 am

SPECIAL EVENT (see page 36), Room B-1, Lowell Hall

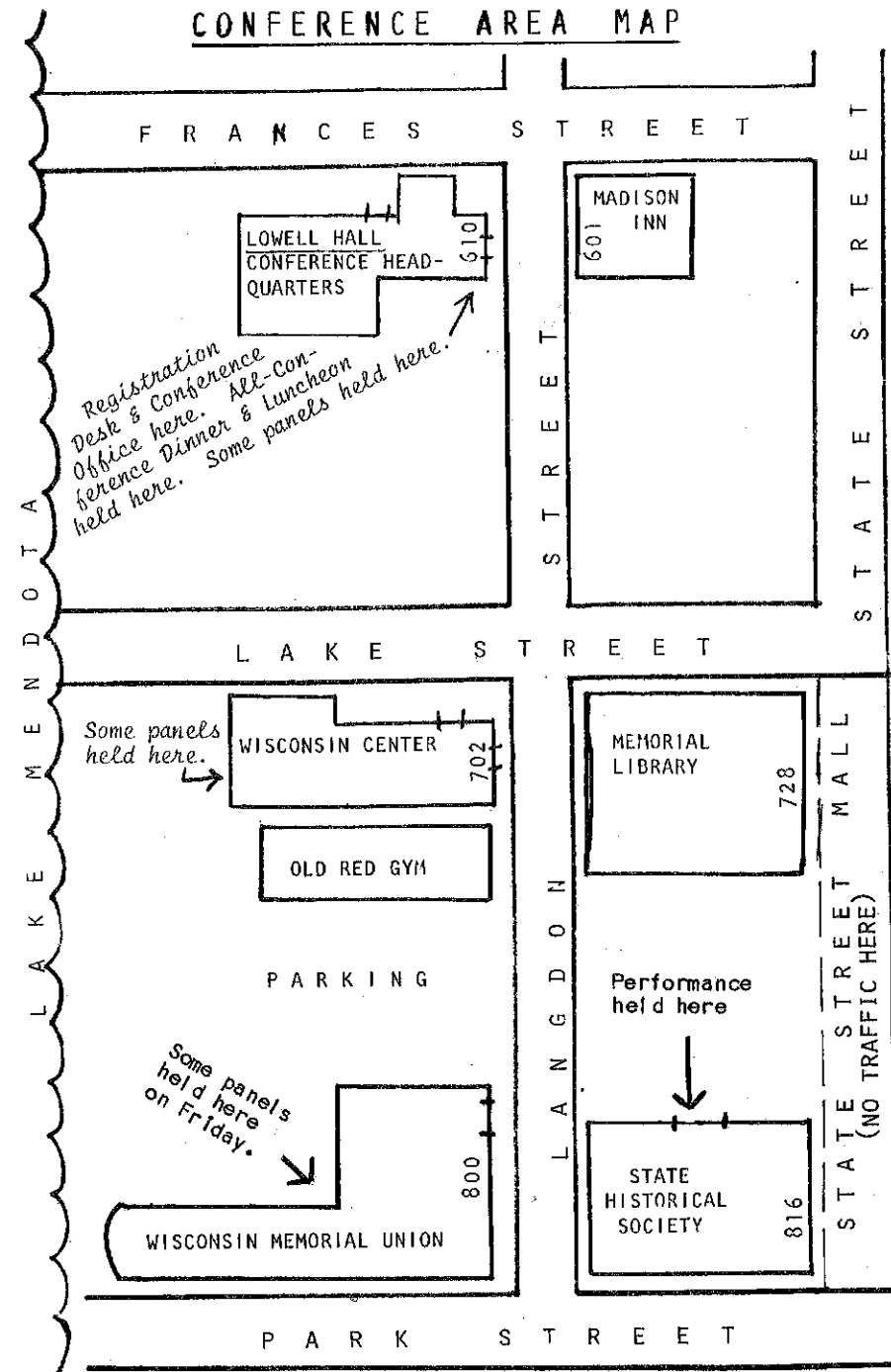
10:15 - 1:00 pm

PANEL SESSIONS 50-59, Lowell Hall & Wisconsin Center, pp. 37-40

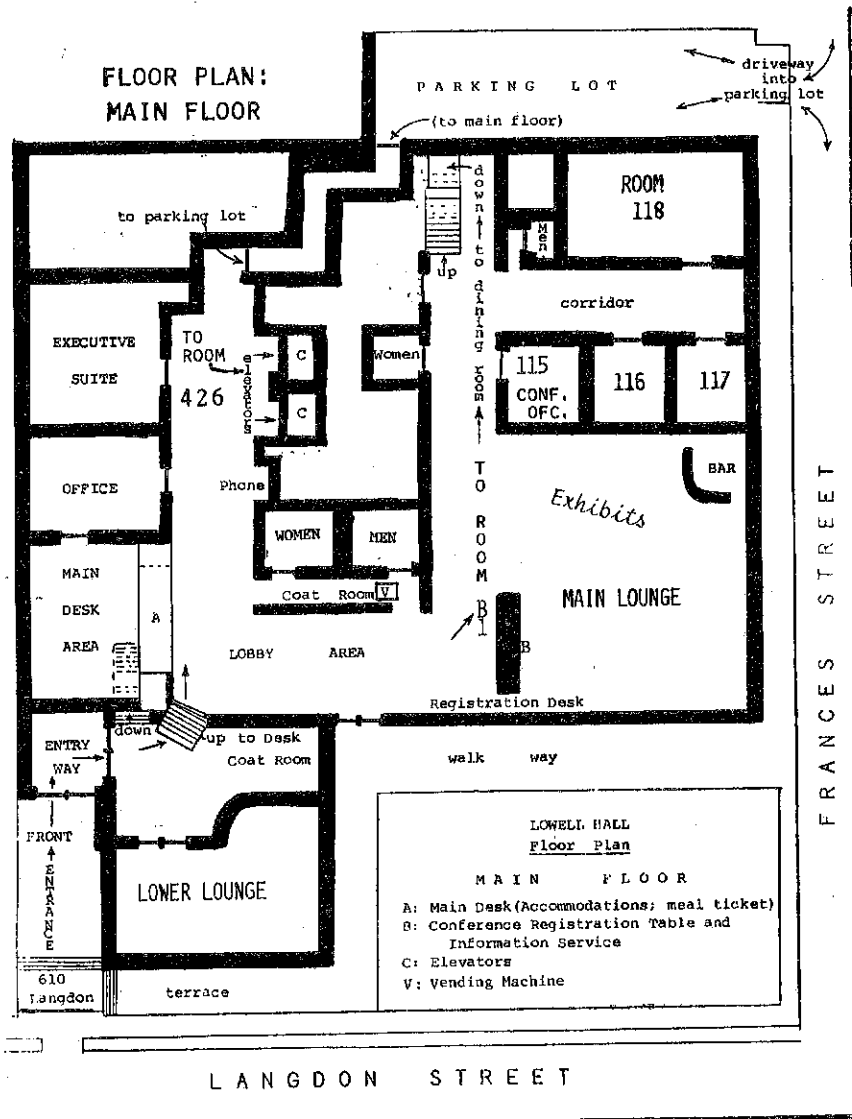
1:00 pm

CONFERENCE ADJOURNMENT

CONFERENCE AREA MAP

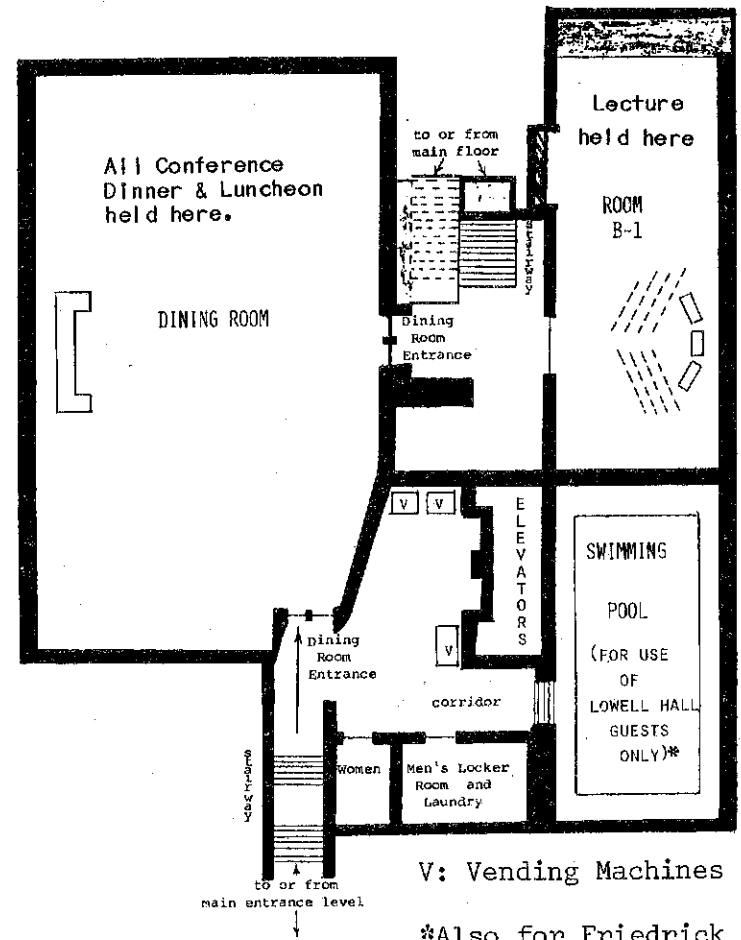


LOWELL HALL
CONFERENCE HEADQUARTERS



LOWELL HALL CONFERENCE HEADQUARTERS

FLOOR PLAN: DOWNSTAIRS (LOWER LEVEL) AREA



THURSDAY, NOVEMBER 1**WORKSHOP:
CHANGING DIVISION OF LABOR IN SOUTH ASIA**

Room 118, Lowell Hall

Organizers:

James Warner Bjorkman, T. Scarlett Epstein, Kusum Nair

During the past year several episodes of extreme communal violence in South Asia have obtained banner headlines. Analytically such acts of visible violence are only late-breaking manifestations of much deeper, more complex patterns of socio-political relationships. These periodic crises in South Asia derive from changing social relations within the division of labor — phenomena which require systematic, dispassionate analyses to be understood, con-strained, & alleviated. The two-day workshop addresses this task.

Noon Inaugural lunch for introductions & themes

2:00-5:00

SESSION I: THE NEW TECHNOLOGIES

Chair: James Warner Bjorkman, University of Wisconsin-Madison

- | | |
|--------------------|--|
| a) Agriculture | Kusum Nair
University of Maryland |
| b) Industry | George Rosen
University of Illinois-Chicago
Circle |
| c) Informal Sector | John Adams & Linda Paul
University of Maryland |
| Discussant | Barry Michie
Kansas State University |

6:00

Dinner at Lowell Hall

7:30-10:30

SESSION II: PARTICIPATORY DEVELOPMENT

Chair: Kusum Nair, University of Maryland

- | | |
|----------------------|--|
| a) Viewed From Above | Surjit Mansingh
American University |
| b) Role of Women | T. Scarlett Epstein
University of Sussex |
| c) Rural Unrest | Kuldeep Mathur
Indian Institute of Public
Administration |
| Discussant | Lloyd I. Rudolph
University of Chicago |

FRIDAY, NOVEMBER 2**WORKSHOP:
CHANGING DIVISION OF LABOR IN SOUTH ASIA**

Room 118, Lowell Hall

9:00-12:00

SESSION III: SOCIAL CHANGE

Chair: T. Scarlett Epstein, University of Sussex

- | | |
|--|--|
| a) How Work is Perceived | Sharon Kemp
University of Minnesota |
| b) The Domestic Cycle | Sylvia Vatak
University of Illinois-Chicago
Circle |
| c) Male Outmigration & Matri-Weighted Households | Naveed-i-Rahat Jaafri
University of Sussex |
| d) Ethnicity in South Asia: Implications for Women | Shahida Lateef
Indian Council of Social
Science Research |
| Discussant | Meena Acharya
Nepal Rashtra Bank |

12:30

Workshop Lunch at Lowell Hall

2:00-5:00

SESSION IV: FUNDAMENTALISM

Chair: James Warner Bjorkman, University of Wisconsin-Madison

- | | |
|------------------------|---|
| a) Hindu Revivalism | Kenneth Jones
Kansas State University |
| b) Buddhist Revivalism | Kingsley de Silva
Peradeniya University |
| c) Sikh Revivalism | Paul Wallace
University of Missouri |
| d) Islamic Revivalism | Mumtaz Ahmad
University of Chicago |
| Discussant | Robert E. Frykenberg
University of Wisconsin-Madison |

Adjournment

FRIDAY MORNING, NOVEMBER 2

9:00 a.m. to 11:45 a.m.

Session 1 Room 118, Lowell Hall

WORKSHOP: CHANGING DIVISION OF LABOR IN SOUTH ASIA

PART III: SOCIAL CHANGE

(See pp. 10-11)

CHAIR: T. Scarlett Epstein, Univ of Sussex

Session 2 Lower Lounge, Lowell Hall

PANEL: ETHNOSOCIOLOGY & RELATED APPROACHES TO INDIAN CULTURE

CHAIR: Michael Moffatt, Rutgers Univ

✓ *Recent Anthropological Paradigms for the Study of India*

Michael Moffatt, Rutgers Univ

Virgin, Wife & Widow: Complementary Performances & Perceptions in the Mariyamman Festival of a Tamil Town

Manuel Moreno, Northeastern Illinois Univ

The House is the Center: Geography & Relatedness in Kerala Hindu Culture

Melinda Moore, Univ of Chicago

✓ *Auspiciousness in North Indian Social Life*

Gloria Raheja, Chicago, Ill.

✓ *Humoral Thought in Hindu & Muslim Ethnologies*

Richard Kurin, Southern Illinois Univ

✓ *Subjectivity, Illness & Change: Five Scenes From Contemporary Ayurveda*

Judy Pugh, Univ of British Columbia

The Development Acquisition of American & Hindu Cultural Conceptions of the Person

Joan Miller, Univ of Chicago

✓ *Love in A Tamil Family*

Peggy Egnor, Hobart & William Smith Colleges

Power, Territory & Hierarchy: The Royal Subcaste in a Tamil Little Kingdom

Nicholas B. Dirks, California Institute of Technology

Some Critical Remarks on Ethnology

Lee Schlesinger, Univ of Pennsylvania

✓ DISCUSSANT: McKim Marriott, Univ of Chicago

FRIDAY MORNING, NOVEMBER 2

9:00 a.m. to 11:45 a.m.

Session 3 Room 426, Lowell Hall

SYMPOSIUM ON THE LESS KNOWN LITERATURES OF SOUTH ASIA

CHAIR: Narendra K. Sinha, Peoria, Illinois

RAJASTHANI LITERATURE

Karine Schomer, Univ of California, Berkeley

KASHMIRI LITERATURE

G. L. Tikku, Univ of Illinois

MAITHILI LITERATURE

Prabhakar Jha, Univ of California, Davis

Break: Ten minutes

NEPALI LITERATURE

Krishna Pradhan, Univ of Wis-Madison

MUNDARI LITERATURE

Norman H. Zide, Univ of Chicago

DISCUSSANTS: Manindra K. Verma, Univ of Wis-Madison &

Kali Charan Bahl, Univ of Chicago

Session 4 Room B-1, Lowell Hall

THE PRACTICE OF RITUAL & PERFORMANCE IN SOUTH ASIA

CHAIR: James Moy, Univ of Wis-Madison

Possession & Mimesis as Interacting Modes of Masked Performance

John Emigh, Brown Univ

Masking in Sri Lankan Performance

Bruce Kapferer, Univ of Adelaide

The Presence of Power & The Power of Presence In

South Indian Martial & Performing Arts

Phillip B. Zarrilli, Univ of Wis-Madison

✓ *Two Introductory Studies on the Newar Pyakham: The Jala Pyakham of Harisiddhi: A Classical Newar Ritual Drama In Nepal*

Linda Ittis, Univ of Wis-Madison

✓ *Two Introductory Studies on the Newar Pyakham: The Gam Pyakham of Patan: A Classical Newar Ritual Dance in Nepal*

Terry Ellingson, Univ of Washington

A Look at Lhamo Performance as Ritual & Recreation in the Community & Community/Audience as Players in Lhamo

Jeanette Snyder, Milwaukee, Wis.

✓ DISCUSSANTS: Richard Schechner, New York Univ & Stuart Blackburn, Dartmouth Univ

FRIDAY LUNCH BREAK PERIOD: NOON TO 1:00 P.M.

ANCILLARY MEETINGS & SPECIAL PRESENTATIONS

OLD MADISON ROOM, MEMORIAL UNION

Nepal Studies Association
Business Meeting

Ronald M. Bernier, President, Univ of Colorado-Boulder

ROOM 426 LOWELL HALL

Society for Asian Cinema Studies

Mira Reym Binford, Organizer, Quinnipiac College

A newly organized society which aims to provide a forum for scholarly exchange & to encourage research, teaching, & publication on the cinemas of Asia. Meeting open to all interested persons.

LOWER LOUNGE, LOWELL HALL

"PRINCES, ARTISANS, & ARCHITECTS:

COLONIAL BUILDING IN PRINCELY INDIA, 1850-1930"

A Slide/Lecture

by

Thomas R. Metcalf

Department of History, University of California-Berkeley

ROOM B-1, LOWELL HALL

BHARATA NATYAM DANCE PRESENTATION

by

PARUL SHAH

12:15 to 1:00

Parul Shah is a guest artist from India to the Univ of Wisconsin-Madison Departments of South Asian Studies and Theatre & Drama for the 1984-85 academic year. Parul has a PhD in Bharata Natyam from the M.S. University of Baroda & is a member of the Faculty of Performing Arts there. In addition to her teaching duties, she has performed in major cities in India, Sri Lanka, Iraq, Tunis, Syria, Turkey, Denmark & elsewhere, giving performances & lecture demonstrations of Indian classical & folk dances.

BEEFEATERS ROOM, MEMORIAL UNION

Committee on South Asian Women (COSAW) Meeting

Dr. Jyotsna Vaid, Coordinator

(see page 3, Conference Notes)

CONTINUOUS FILM SHOWINGS

All Day Saturday, 9:00 a.m. to 5:00 p.m.

Wisconsin Center Auditorium

BEING A MUSLIM IN INDIA (20 min)

(James McDonald, Filmmaker, Worldview Productions)*

AHMEDABAD (45 min)

(By Howard Spodek, Temple Univ)*

SO FAR FROM INDIA (55 min)

Meera Nair, Filmmaker

Distributed by Filmmaker's Library

133 E. 58th St. NYC 10022

Shown courtesy of COSAW

HANDICRAFTS (16 min)

MUSIC & DANCES OF PAKISTAN (30 min)

MOENJODARO

(Above 3 films made available through the Information Division, Embassy of Pakistan, Washington, D.C.)

THREAD LINE GALLERY OF PAKISTAN (45 min)

Shown courtesy of the Pakistan Students' Association,

University of Wisconsin-Madison

RANGOLI (16 min)

MIRZA GHALIB (20 min)

INNER EYE (20 min)

(Above 3 films made available through the Information Wing of the Embassy of India, Washington, D.C.)

CHILDREN LEARNING ANOTHER LANGUAGE: AN INNOVATIVE APPROACH

(Available from Sky Oaks Productions, Inc., Box 1102,
Los Gatos, CA 95031)

* These films are distributed by the Wisconsin South Asian Area Center. See film brochure & price list in your Conference portfolio for information on previews, sales & rentals of these films & others.

FRIDAY AFTERNOON, NOVEMBER 2

1:15 p.m. to 3:00 p.m.

Session 5 Room 118, Lowell Hall

WORKSHOP: CHANGING DIVISION OF LABOR IN SOUTH ASIA

PART IV: FUNDAMENTALISM

(2:00 - 5:00 p.m. — see pp. 10-11)

CHAIR: James Warner Bjorkman, Univ of Wis-Madison

Session 6 Room B-1, Lowell Hall

**WHO (WHAT) CONTROLS THE SPIRITS: SOUTH ASIAN SPIRIT
POSSESSION RITUALS AS PERFORMANCES, PART I**

CHAIR: Diane Coccarri, Univ of Wis-Madison

Reflexivity of a Possession Ritual Score

Peter J. Claus, California State Univ, Hayward

How to Talk to Spirits

Beth Simon, Univ of Wis-Madison

*Possession as Individual, Ritual & Social Performance in a
Hindu Village of Nepal*

Alfred Pach, Univ of Wis-Madison

DISCUSSANT: Stuart Blackburn, Dartmouth Univ

Session 7 Old Madison Room, Memorial Union

EXPERIMENTS IN ISLAMIC INSTITUTION BUILDING IN PAKISTAN

CHAIR: Rafiq Ahmad, Islamic Univ, Pakistan

Zakat Administration & Social Welfare in Pakistan

Grace Clark, Maryland State Government

Interest-Free Banking & Islamization of Economy in Pakistan

Mohammad Arif, Clark Univ/State Bank of Pakistan

*Experiments in Islamic Institution Making: A Comparative
Study of Iran & Pakistan*

Mohammad Yadegari, Union College

DISCUSSANT: Mumtaz Ahmad, Univ of Chicago

Session 8 Beefeaters Room, Memorial Union

APPROACHES TO NEPALI CULTURAL HISTORY

CHAIR: A. W. Hanson-Barber, Middleton, Wis.

*Galactic Polity & The Anthropology of Hindu-Buddhist
Relations in the Himalayas*

Todd T. Lewis, Columbia Univ

*Treasure Garden: A Unique Feature In Nepalese Landscape
Architecture*

Gautam Vajracharya, Univ of Wis-Madison

*Considerations of Tibeto-Burman Scripts in Himalayan
Cultural History*

Richard English, Columbia Univ

*The Role of the Guru in the Vajrayana: A New Interpretation
Based on Newar Sources*

A. W. Hanson-Barber, Middleton, Wis.

FRIDAY AFTERNOON, NOVEMBER 2

1:15 p.m. to 3:00 p.m.

Session 9 Room 426, Lowell Hall

BANGLADESH IN TRANSITION

CHAIR: Salim Rashid, Univ of Illinois

*The Lure of Foreign Graduate Study: Perceptions of
Bangladeshi University Students*

Larry Crisler, Millikin Univ & Najmul Hossain,
Southeastern Louisiana Univ

The Powerful Few: Urban Elites of Chittagong, Bangladesh

Shamsul Huda, Univ of Illinois

The Impact of Food Aid on Bangladesh

Monzurul Hoque, Univ of Illinois

*Strategy for Integrated Rural Development in Bangladesh:
A Growth Point Approach*

Sarwar Jahan, Univ of Illinois

DISCUSSANTS: Haroon Khan, Univ of Kansas & Kazi Sadrul Hoque,
Purdue Univ

Session 10 Lower Lounge, Lowell Hall

**THE SOUTH ASIAN LANDSCAPE: A SERIES OF SELECTED RECENT
RESEARCH TOPICS, PART I**

CHAIR: Abbie Ziffren, Univ of Wis-Madison

1:20 *Socioeconomic Characteristics & Nutritional Status of
Nepalese Children in Chitawan*

Bishnu Bhandari, Univ of Wis-Madison

1:45 *Causative Constructions in Telegu*

Malathi Rao, Univ of Wis-Madison &

Elena Bashir, Univ of Michigan

2:10 *The Power of Tradition in the Modern Industrial Sector:
Female Factory Workers in Pakistan*

Anita Weiss, Univ of California-Berkeley

2:35 *Social Reality in the Stories of R.K. Narayan & Manohar
Maigankar*

Alur Janaki Ram, Rajasthan Univ

Session 11 Roundtable Room, Memorial Union

**WORKSHOP: ON THE SOCIAL HISTORY & RELATIONS OF MONEY IN
SOUTH ASIA, Part I**

CO-ORGANIZERS: Nicholas B. Dirks, California Institute of
Technology & Stewart Gordon, Los Angeles

*Commodity Fetishism & Political Form: Money & The Old
Regime in South India*

Nicholas Dirks, California Institute of Technology

Changing Conceptions of Money in Pre-British South India

Carol Breckenridge, ISHI

Military Fiscalism: War, Commerce, Land, & Money

Burton Stein, SOAS

*Monetized Mughal Parganas of Central India: The Center of
the Monetization Frontier*

Stewart Gordon, Los Angeles, CA

Money-Use in Khandesh in the Late Seventeenth Century

John F. Richards, Duke Univ

FRIDAY AFTERNOON, NOVEMBER 2

3:15 p.m. to 5:00 p.m.

Session 12 Room 118, Lowell Hall

WORKSHOP: CHANGING DIVISION OF LABOR IN SOUTH ASIA

PART IV: FUNDAMENTALISM

(2:00 - 5:00 p.m. — see pp. 10-11)

CHAIR: James Warner Bjorkman, Univ of Wis-Madison

Session 13 Room B-1, Lowell Hall

WHO (WHAT) CONTROLS THE SPIRITS: SOUTH ASIAN SPIRIT POSSESSION RITUALS AS PERFORMANCES, PART II

CHAIR: Diane Coccari, Univ of Wis-Madison

The Feeling of A God, the Blemish of a Witch: Dimensions of Possession in Rajasthan

Ann Gold, Oberlin, Ohio

The Play of the Goddess: Possession & Performance in the Cult of Seranvali

Kathy Erndl, Univ of Wis-Madison

BHUT BADHA and ANGOT YENE as Ritual Performance

John Stanley, Lawrence Univ

Manipulation & Control of Power Through Aesthetics & Mythological Authority in Pampin Thullal, A Cobra

Possession Ritual of Rural Kerala

Deborah Neff, Madison, Wis.

DISCUSSANT: Gananath Obeyesekere, Princeton Univ

Session 14 Old Madison, Memorial Union

ETHNICITY, TRANS-NATIONAL, & SUB-NATIONAL CONFLICTS IN S.ASIA

CHAIR: Karen Eide Rawling, Washington, D.C.

Afghan Mujahideen, Sub-National Conflicts & Complexities of U.S. Involvement

Sultan Gulzad, Univ of Wis-Madison

Baluchistan: A Nation In Embryo?

Ann P. Kalayil, Univ of Wis-Madison

Dynamics of Ethnic Violence in Sri Lanka

Joseph W. Elder, Univ of Wis-Madison

Ethnicity & Political Conflicts in India

Akhtar Majeed, Aligarh Muslim Univ

DISCUSSANT: Karen Eide Rawling, Washington, D.C.

Session 15 Lower Lounge, Lowell Hall

TEACHING WORKSHOP: IMAGINATIVE APPROACHES TO SOUTH ASIA

CHAIR: Judi Benade, Univ of Wis-Madison

Development of Popular Urban Culture: Musical Activities in Banaras & What They Mean to the Participants

(presentation includes slides & tapes)

Nita Kumar, Univ of Chicago

Gender Differences in Attainment of Supernatural Powers by Hindus of Rural Northern India

Bradley Hertel, Virginia Polytechnic Institute & State U

Why Arranged Marriages Work

Abbie Ziffren, Univ of Wis-Madison

DISCUSSION/INFORMANT: Melba Jesudasan, Univ of Wis-Madison

FRIDAY AFTERNOON, NOVEMBER 2

3:15 p.m. to 5:00 p.m.

Session 16 Room 426, Lowell Hall

THE SOUTH ASIAN LANDSCAPE: A SERIES OF SELECTED RECENT RESEARCH TOPICS, PART II (NEPAL)

CHAIR: Jashu Patel, Chicago State Univ

3:20 *Financial Policy & Development Goals:*

The Case of Nepal's Construction Projects

Ramesh Vaidya, Univ of Minnesota-Duluth

3:45 *Perspectives on the Prospects for Economic Growth in Nepal*

Shankar Sharma, East-West Center, Honolulu

4:10 *The Interfacing of Forestry into Nepal's Development Planning*

R. E. Adams & W. A. Leuschner, Virginia Polytechnic

Institute & State Univ, & Mervin E. Stevens, USDA

Forest Service, Forestry Support Program

(Robert E. Adams will present the paper)

4:35 *The People of Nisyang: Ethnic Identity in the Nepal-Tibet Borderland*

M. T. Cooke, Univ of California-Berkeley

Session 17 Beefeaters Room, Memorial Union

THE PRESS AMID CONFLICTING NATIONAL LOYALTIES

CHAIR: Ainslee T. Embree, Columbia Univ

Shaping a Nation: The Role of Robert Knight

Edwin Hirschmann, Towson State Univ

Nationalism, The Congress, & The Punjab Press, 1885-1910

N. G. Barrier, Univ of Missouri

News Services & Nationalism: The Indianization of Reuters, 1914-1947

Milton Israel, Univ of Toronto

DISCUSSANT: Ainslee T. Embree, Columbia Univ & William A.

Hachten, Univ of Wis-Madison

Session 18 Roundtable Room, Memorial Union

WORKSHOP: ON THE SOCIAL HISTORY & RELATIONS OF MONEY IN SOUTH ASIA, Part II

CO-ORGANIZERS: Nicholas B. Dirks, California Institute

of Technology & Stewart Gordon, Los Angeles

'Against the Dissolving effects of Trade': Monetary & Non-Monetary Forms of Exchange

Frank Perlin, Erasmus Univ

Money, Exchange & Production in the Agrarian Economy of the Coromandel

David Washbrook, Warwick Univ

Markets, Grain Trading, & Revenue Farming in the Baramahal

Brian Murton, Univ of Hawaii

Money, Banking, & The Nattukkottai Chettiars

David Rudner, Univ of Pennsylvania

DISCUSSANT: Lee Schlesinger, Univ of Pennsylvania

FRIDAY EVENING, NOVEMBER 2

✓
✓
SOCIAL HOUR (No Host Bar): 5:00 to 6:00 P.M.
Main Lounge Area, Lowell Hall

ALL CONFERENCE DINNER: 6:00 to 7:30 P.M.
Lowell Hall Dining Room

WELCOME & INTRODUCTORY REMARKS BY:
V. Narayana Rao
Chairman, 13th Annual Conference Program Committee
University of Wisconsin-Madison

SPECIAL INTRODUCTIONS

DINNER MENUS

<i>Vegetarian</i>	<i>Non-Vegetarian</i>
Raajma Curry	Chicken Ceylonese
Stuffed Simla Mirch	Vegetable Pillau
Green Bean & Coconut Salad	Green Bean & Coconut Salad
Aloo Gobi	Aloo Gobi
Vegetable Pillau	Pacchadi
Pacchadi	Pita Bread
Pita Bread	Payasam
Payasam	Beverage
Beverage	

Please display your dinner ticket near your coffee cup at your place at your table.
Tickets will be collected as dinner is served.

* * *

SPECIAL INVITED LECTURE: 8:00 P.M.
Lowell Hall, Room B-1
610 Langdon Street

The Wisconsin South Asian Area Center
is pleased to present

GANANATH OBEYESEKERE

Department of Anthropology
Princeton University

speaking on

**CONSCIENCE OF DUTTHA-GAMANI ABHAYA (DUTUGAMUNU):
THE ANTHROPOLOGIST AS MYTH MAKER**

VIDEOTAPE SHOWINGS: ALL DAY SATURDAY

Room 426, Lowell Hall

The following videocassette tapes are available for viewing from 8:00 a.m. to 5:00 p.m. Saturday. Stop by and request the ones you wish to see.

DARPANA DANCE TROUPE PERFORMANCE*

NORTH INDIAN CLASSICAL MUSIC:

Shiv Kumar Sharma, Santoor, & Zakir Hussain, Tabla*
(60 minutes)

KARNATIC DRUM ENSEMBLE CONCERT*

(60 minutes)

DADI & HER FAMILY: A RURAL MOTHER-IN-LAW IN NORTH INDIA**

AFGHANISTAN 82

(20 minutes)

(Information on this tape available from the Center for
Afghanistan Studies, University of Nebraska at Omaha.)

THE PAINTED TRUCK

(20 minutes)

(Information on this tape available from the Center for
Afghanistan Studies, University of Nebraska at Omaha.)

THE STATE ORACLE OF TIBET

(This tape is produced, edited & directed by
Ter Ellingson, Univ of Washington-Seattle, as
part of his Rituals & Festivals of Asia series.)

* Available for loan from Outreach Office, WISAAC.

**This is a tape of a film distributed by WISAAC. See film brochure & price list in your
Conference portfolio for information on previews, sales, & rentals of the films.

SATURDAY MORNING, NOVEMBER 3
8:15 a.m. to 10:00 a.m.

Session 25 Room 224, Wisconsin Center

QUESTIONS OF FORM IN INDIAN CINEMA

CO-CHAIRS: Mira Reym Binford, Quinnipiac College
& Satti Khanna, Univ of California-Berkeley

Aesthetics of Indian Cinema: Indigenous Forms & International Influences

Mira Reym Binford, Quinnipiac College

The Poetry of Muktibodh in Print & On Film

Satti Khanna, Univ of California-Berkeley

The Significance of the Qawwali in Hindi Films

Bruce R. Pray, Univ of California-Berkeley

DISCUSSANTS: Leslie Flemming, Univ of Arizona &
Vance Kepley, Univ of Wis-Madison

This panel is immediately followed by a screening of
Mani Kaul's film *SATAHA SA UTHATA ADMI* (see page 27).

Session 26 Room 316, Wisconsin Center

**THE SOUTH ASIAN LANDSCAPE: A SERIES OF SELECTED RECENT
RESEARCH TOPICS, PART III**

CHAIR: Manindra K. Mohapatra, Kentucky State Univ

8:20 *How Many VAIDYAS Does It Take To Change A Lightbulb?—
Satires of Physicians in Sanskrit Literature*

Lee A. Siegel, Univ of Hawaii

8:45 *The Balagopalastuti & Early Krsnabhakti in Gujarat*

Elinor Gadon, Univ of California-Santa Barbara

9:10 *Child Labour Policy in India: A Re-examination*

Ivy George, Gordon College

9:35 *Administrative Decentralization & Rural Development
in Bangladesh: A Review of Upazilla Administration*

Nazmunnessa Mahtab, Univ of Dhaka

SATURDAY MORNING, NOVEMBER 3
10:15 a.m. to 12:00 noon

Session 27 Room 109, Wisconsin Center

**TIBETAN SCHOLARS ON TIBETAN CULTURE, SOCIETY & RELIGION:
IN COMMEMORATION OF TWENTY FIVE YEARS IN EXILE, Part II**

CHAIR: Geshe Sopa, Univ of Wis-Madison

*Max Weber on Tibet: Religion & Polity in a Comparative
Perspective*

Tenzing Takla, Purdue Univ

*The Influx of Tibetans Into Ladakh: The Historical,
Present & Future Contexts*

Siddiq Wahid, Harvard Univ

*The Role of the Labrang Institution in Tibetan Speaking
Areas*

Paljor Tsarong, Univ of Wisconsin

DISCUSSANT: Beatrice Miller, Madison, Wis.

Session 28 Room 118, Lowell Hall

**TEACHING WORKSHOP: CLASSROOM EXCURSIONS TO SOUTH ASIA:
"VISITING" INDIA BY READING NOVELS & PREPARING TRAVEL PLANS**

CHAIR: Dorothe C. Shah, Evanston Township High
School, Global Cultures Teacher

*The Assignments & a Discussion of Their Use with Secondary
Students*

Dorothe Shah, Evanston Township High School

Owen Hein, Evanston Township High School

*Gandhi in R.K. Narayan's WAITING FOR THE MAHATMA & Atten-
borough's Film GANDHI*

Jennifer Peck, Evanston Township High School Student

*Education: R.K. Narayan's SWAMI & HIS FRIENDS Contrasted
With a School Girl's Life in Kerala*

Joseph Sebastian, Evanston Township High School Student

*A Young Magician's Response to Salman Rushdie's MIDNIGHT'S
CHILDREN*

Joshua Safford, Evanston Township High School Student

DISCUSSION: Itinerary projects, students' views of Indian
life, classroom assignments, etc.

Session 29 Room 212, Wisconsin Center

SOCIAL MOVEMENTS IN PAKISTAN

CHAIR: Shahnaz J. Rouse, Univ of Wis-Madison

The Sindhi Movement: Its History & Development

Mehar Hussein Shah, Houston, Texas

Baluch Nationalism & Its Struggle for Autonomy

Riaz Malik, Minneapolis, MN

Democracy, Class & Nation in Pakistan

Ajjaz Ahmad, Rutgers Univ

DISCUSSANTS: Vasant Kaiwar, UCLA & Bilal Hashmi, Eastern
Washington Univ

Saturday 10:15 a.m. panel sessions continued on pp. 26-27—

SATURDAY MORNING, NOVEMBER 3

10:15 a.m. to 12:00 noon

Session 30 Room B-1, Lowell Hall

MAN, ENVIRONMENT, LAND, & POWER IN RAJASTHAN
(Panel convened under the sponsorship of the Rajasthan Studies Group)

CHAIR: John F. Richards, Duke Univ

Changing Land Use & Land-Use Ethic in Rajasthan, 1850-1980

Edward S. Haynes, Duke Univ

Production Intensification of Dryland Agriculture:

Indigenous Responses to Ecological Crisis

Barrie Michie, Kansas State Univ

Livestock Production: Policy, Pressures, & Responses

Carol Henderson, Columbia Univ

The Normative Parameters of Land Tenure Policy in Rajasthan

Aruna Michie, Kansas State Univ

DISCUSSANTS: Deryck O. Lodrick, San Francisco, CA &

Richard P. Tucker, Oakland Univ

Session 31 Room 227, Wisconsin Center

DEATH, WOMEN, & REGENERATION IN THE HINDU WORLD

CHAIR: Frederique Apffel Marglin, Smith College

Regeneration & the Single Goddesses in Puri

Frederique A. Marglin, Smith College

Sacrifice & Regeneration in the Ritual of SATI

Paul Courtright, Univ of North Carolina

Death & Regeneration in the Draupadi Cult

Aif Hiltebeitel, George Washington Univ

DISCUSSANTS: Gananath Obeyesekere, Princeton Univ &

T. N. Madan, Institute of Economic Growth, Delhi and

Visiting Professor at Harvard Univ

Session 32 Room 316, Wisconsin Center

THE INDO-ISLAMIC CITY

CHAIR: Gavin R. G. Hambly, Univ of Texas at Dallas

Delhi Under the Shamsi Sultans

Gavin R. G. Hambly, Univ of Texas at Dallas

Mughal Regional Centers in Eastern India

Catherine B. Asher, Univ of Minnesota

Fatehpur-Sikri: New Directions & Interpretations

Glenn D. Lowry, College of William & Mary, & Michael

Brand, Harvard Univ

The Foundation of Shahjahanabad: Political, Economic & Symbolic Aspects

Stephen P. Blake, Univ of Minnesota

SATURDAY MORNING, NOVEMBER 3

10:15 a.m. to 12:00 noon

Session 33 Room 313, Wisconsin Center

ROUNDTABLE: SOUTH ASIA: FROM CONFLICT TO COOPERATION?

CHAIR: R. V. R. Chandrasekhara Rao, Hyderabad Univ

DISCUSSANTS:

Stephen P. Cohen, Univ of Illinois

Raju G.C. Thomas, Marquette Univ

A. Prasanna Kumar, Andhra Univ

Group Captain S. G. Chitnis (ret.), Poona Univ

Lok Raj Baral, Tribhuvan Univ & Univ of Illinois

B. Ramesh Babu, Bombay Univ

Maj. S. H. Nuri (ret.), Islamabad & Univ of Illinois

Room 224, Wisconsin Center

FILM SCREENING: Mani Kaul's film **SATAHA SA UTHATA ADMI**

This feature film will be screened immediately following the panel **QUESTIONS OF FORM IN INDIAN CINEMA** (Session 25, page 24). Handouts on the film will be available.

Lower Lounge, Lowell Hall (10:15 to 11:30 a.m.)

INFORMATION PRESENTATION ON THE FESTIVAL OF INDIA

Niranjan Desai, Minister (Culture),

Government of India

Maureen Liebl, Conferences Coordinator, Festival of India

(Other representatives of the Indo-U.S. Subcommission staff may also be available.)

Questions & discussions about the things that will be happening during the Festival of India Year.

Room 138, Wisconsin Center

Nepali 'Gyana-Goshthi' Meeting

Krishna Pradhan, Organizer

SATURDAY AFTERNOON, NOVEMBER 3

12:00 Noon to 1:00 P.M.

ALL CONFERENCE LUNCHEON
Lowell Hall Dining Room

BUFFET LUNCHEON MENU

Chef's Salad Bar - Select Your Favorite Ingredients
Choice of Dressings
Chickpea & Green Bean Salad
Cucumber Raita
Ceylonese Onion & Tomato Salad
Spinach & Yogurt Salad
Assorted Nut Breads & Butter
Cookies & Brownies
Beverage

* * *

SATURDAY AFTERNOON, NOVEMBER 3

1:00 p.m.

Room B-1, Lowell Hall

FEATURED SPEAKER

HIS EXCELLENCY

K. S. BAJPAI

Ambassador from India
To The United States

speaking on

**South Asian Regional Cooperation:
Possibilities & Perspectives**

SATURDAY AFTERNOON, NOVEMBER 3

2:00 p.m. to 3:45 p.m.

Session 34 Room 118, Lowell Hall

VALUES & VISIONS IN SRI LANKA: PRACTICE & PERFORMANCE

CHAIR: James Warner Bjorkman, Univ of Wis-Madison
Fishermen, Prawns, & Politics in Sri Lanka
Hans Houshower, Univ of Washington
Strategic Urban Development Issues in Sri Lanka
Ved Prakash & Jack R. Huddleston, Univ of Wis-Madison
Social Welfare & Personal Salvation: Theory & Practice in Sri Lankan Buddhism
Telwatte Rahula, McGill Univ
Ethnic Roots of the Sri Lanka Crisis
V. P. Vaidik, Institute for Defence Studies & Analysis,
New Delhi
Sri Lankan Masks in the Context of Ritual
Miguel Hewage Goonatilleka, Univ of Kelaniya
DISCUSSANT: B. L. Panditharatne, Univ of Peradeniya

Session 35 Room B-1, Lowell Hall

LANGUAGE TEACHING PANEL: INNOVATIVE APPROACHES TO THE TEACHING OF SOUTH ASIAN LANGUAGES (A panel geared to K-12 teachers & college language instructors)

CHAIR: Paul W. Staneslow, Univ of Minn
Perspectives & Practices: Innovation in Language Teaching & Learning
David Bastien, Univ of Minn
Theoretical Considerations in Second-Language Acquisition
Paul W. Staneslow, Univ of Minn
FILM: *CHILDREN LEARNING ANOTHER LANGUAGE: AN INNOVATIVE APPROACH*
LIVE DEMONSTRATION: Children learning Hindi
DISCUSSANT: Karl Sandberg, Macalester College

Session 36 Room 212, Wisconsin Center

NISKAMA KARMA

CHAIR: S. S. Rama Rao Pappu, Miami Univ
The Concept of NISKAMA KARMA
Dipankar Chatterjee, Univ of Utah
NISKAMA KARMA: Ethical & Psychological Aspects
S. S. Rama Rao Pappu, Miami Univ
Karma Yoga in the GITA: An Economic Class Interpretation
V. Subramaniam, Carleton Univ
DISCUSSANT: Keith Yandell, Univ of Wis-Madison

Saturday 2:00 panel sessions continued on pp. 30-31—

SATURDAY AFTERNOON, NOVEMBER 3

2:00 p.m. to 3:45 p.m.

Session 37 Room 224, Wisconsin Center

THE POTENTIAL OF AFGHANISTAN'S SOCIETY & INSTITUTIONS TO RESIST SOVIET DOMINATION

CHAIR: Leon Poullada, St. Paul, Minn.

Stages in the Sovietization of Afghanistan

Nake Kamrany, Univ Park-MC

Zahir Shah and The Question of Unity in the Afghan Resistance

Thomas Gouttierre, Univ of Nebraska-Omaha

The Afghan Character as a Factor in Resistance to Soviet

Domination of Afghanistan

Leon Poullada, St. Paul, Minn.

DISCUSSANTS: Richard Newell, Univ of Northern Iowa & Mobin

Shorish, Urbana, Ill. & Ghulam Ali Ayeen, Univ of

Nebraska-Omaha

Session 38 Room 313, Wisconsin Center

SYMBOLIC TREATMENT OF WOMEN: CURRENT RESEARCH ON SOUTH ASIA

CHAIR: Jyotsna Vaid, Univ of California-San Diego

Transcreation of Native Contexts: Women & Indian English

Tamara Valentine, Univ of Illinois

Depiction of Women in Pakistani Mass Media: A Review of Current Research

Saleha Suleman, Univ of Wis-Madison

Selling the Product, Selling the Image of "Woman":

Content Analysis of Indian Advertisements

Rashmi Luthra, Univ of Wis-Madison

DISCUSSANT: Ernestine McHugh, Univ of California-San Diego

Session 39 Room 316, Wisconsin Center

TEXTS & TEXTUAL PRACTICES IN SOUTH ASIA

CHAIR: Vinay Dharwadker, Univ of Chicago

The Sound of Silent Guns: Reflections on a Poem by Jibananand Das

Edward Dimock, Univ of Chicago

Contemporary Text Theory & the Kabir Canon

Vinay Dharwadker, Univ of Chicago

Texts & Non-Texts: The Ideology of Text Recognition in South Asia

V. Narayana Rao, Univ of Wis-Madison

Blurred Lines in Time! On the Textual Traditions of Some Sanskrit KAVYA

Barbara Stoler Miller, Barnard College

DISCUSSANT: A. K. Ramanujan, Univ of Chicago

SATURDAY AFTERNOON, NOVEMBER 3

2:00 p.m. to 3:45 p.m.

Session 40 Room 227, Wisconsin Center

BUSINESS CLIMATE IN INDIA

CHAIR: Harish Batra, Univ of Wis-Whitewater

Economic Growth & Government Policy

S. P. Bhagla, Indian Embassy, Washington, D.C.

Economic & Financial Climate & Resources

Ashok Bhargava & Harish Batra, Univ of Wis-Whitewater

Business Climate in India: Marketing

G. M. Naidu, Univ of Wis-Whitewater

Investment Climate in India

S. V. S. Sharma, Indian Investment Center

DISCUSSANTS: Patrick A. Willis, U.S. Dept. of Commerce,

Milwaukee, Wis. & B.J. Bhatt, Univ of Toledo

Session 41 Room 109, Wisconsin Center

THE SOUTH ASIAN LANDSCAPE: A SERIES OF SELECTED RECENT RESEARCH TOPICS, PART IV

CHAIR: Sauri P. Bhattacharya, Southeastern

Oklahoma State Univ

2:05 *Divergent Histories & Convergent Fictions in the Novels of Salman Rushdie*

Ann McBride-Limaye, Univ of Wis-Madison

2:30 *Music in Tulsidas's Poetry: Focus on Recitation Techniques of Ramcharitmanas*

Nirmala Jain, Univ of Delhi

2:55 *Nationalism & the Role of a British Cultural Organization in the Developing World: The PEN Club in India & Argentina in the 1930's*

Jesus Mendez, Barry Univ

3:20 *The Agonies of an Agonizer: "Rebel Poet" Kazi Nazrul Islam of Bengal & the Orthodoxies He Encountered: A Socio-Political Analysis*

Priti Kumar Mitra, Univ of Hawaii

Room 138, Wisconsin Center

Rajasthan Studies Group Meeting

SATURDAY AFTERNOON, NOVEMBER 3
4:00 p.m. to 5:45 p.m.

Session 42 Room 212, Wisconsin Center

PAKISTAN IN WORLD POLITICS DURING THE 1980's

CHAIR: S. S. Nyang, Howard Univ

Pakistan & The Superpowers in the 1980's

Tahir Amin, M.I.T.

Indo-Pakistan Relations in the 1980's

Sharif al-Mujahid, Quaid-I-Azam Academy

Pakistan & the African States

Sulayman S. Nyang, Howard Univ

DISCUSSANTS: Mumtaz Ahmad, Univ of Chicago &

Tayyib Siddiqui, Embassy of Pakistan

Session 43 Room 224, Wisconsin Center

RITUAL, SOCIETY, & SYMBOL IN NEPAL

CHAIR: Kathryn March, Cornell Univ

*The Anthropology of Illness & Healing in Nepal:
A Critical Review*

Stacy Pigg, Cornell Univ

The Logics of Sacrifice in Nepal

David Holmberg, Cornell Univ

*Transmutation & Debate: The Shamanistic Roots of Lama
Rituals in Nepal*

Stanley Mumford, Princeton, NJ

Buddhist Rationalization in Nepal's Thak Khola Region

Barbara Parker, Univ of Michigan

DISCUSSANT: Kathryn March, Cornell Univ

Session 44 Room 227, Wisconsin Center

MODERN SCIENCE IN THE ASIAN CONTEXT

CHAIR: Raj P. Mohan, Auburn Univ

*Institutionalization of Modern Science in South Asia:
A Basic Framework*

Aqueil Ahmad, Northwestern Univ

Political Economic Considerations in Asian Science &

Technology Development: Some Preliminary Considerations

Arthur S. Wilke, Auburn Univ

*Western Medicine in Non-Western Cultures: Some Issues &
Implications*

Todd C. Hanson, Randolph-Macon College

DISCUSSANT: Raj P. Mohan, Auburn Univ

SATURDAY AFTERNOON, NOVEMBER 3
4:00 p.m. to 5:45 p.m.

Session 45 Room 313, Wisconsin Center

INFORMATIONAL ROLE OF MASS MEDIA IN THE SOUTH ASIAN NATIONS

CHAIR: Joseph Elder, Univ of Wis-Madison

Patterns of Public Information Flow & Its Control in Nepal

Krishna Sijapati, Univ of Wis-Madison

Documentary Film & Development Projects in South Asia

Shekhar Deshpande, Southern Illinois Univ

Foreign Policy & Media Coverage: Pakistan Television's

Coverage of Grenada & Lebanon

Qaisar Abbas, Univ of Wis-Madison

DISCUSSANTS: Ashakant Nimbark, Dowling College & Deepak

Vohra, Press Secretary, Embassy of India

Session 46 Room 118, Lowell Hall

**THE SOUTH ASIAN LANDSCAPE: A SERIES OF SELECTED RECENT
RESEARCH TOPICS, PART V**

CHAIR: William H. H. Cranmer, Hudson, Wis.

4:05 *Vajrayana Buddhist Sculptures of Orissa*

Thomas Donaldson, Cleveland State Univ

4:30 *The Emerging Regional Co-operation & Organisation in
South Asia*

Ravindra Varma, Udaipur Univ

4:55 *Buddhism in Ancient Bengal with Special Reference
to Southeast Bengal*

Puspa Niyogi, Calcutta, India

5:20 *Energy Consumption & Economics Growth: A Case Study of
Pakistan*

Tariq Riaz, Univ of Wisconsin-Whitewater

Session 47 Room 109, Wisconsin Center

KANNADA LYRICIST-MUSICIANS: KNOWN & UNKNOWN

CHAIR: H. K. Chandrasekhar, New York Univ

The Essence of Vachanas of Kannada Mystics

H. Siddhalingiah, Gaithersburg, MD

Purandara Dasa: His Message & His Music

Indu Suryanarayan, Kingston, R.I.

*Sampradaya Pada: A Genre of Traditional, Non-Classical
Music in Karnataka, India*

Gayathri Kassebaum, Univ of Washington

DISCUSSANTS: Bellur S. Prabhakar, National Institute of

Health & Shiva Chandrasekhar, Georgia Tech

Saturday 4:00 panel sessions continued on p. 34—

SUNDAY MORNING, NOVEMBER 4

SOCIAL HOUR

(Coffee & Tea & Muffins)

8:30 a.m.

Main Lounge Area, Lowell Hall

* * *

A SPECIAL PRESENTATION

9:00 to 10:00 a.m.

Room B-1, Lowell Hall

The 13th Annual Conference on South Asia
is pleased to present

**A MUSICAL PERFORMANCE OF
BHAJANS, GEETS & GHAZALS**
by

MANINDRA K. VERMA
University of Wisconsin-Madison

with
Tabla Accompaniment
by

RAVI SHANKAR
University of Wisconsin-Madison

SUNDAY MORNING, NOVEMBER 4

10:15 a.m. to 12:00 noon

Session 50 Room 109, Wisconsin Center

THE GOAN SUBCULTURE IN INDIA

CHAIR: John Hobgood, Chicago State Univ

The de Nationalization of Goa

Veressimo Coutinho, Chicago Board of Education

*Avertano de Ioyola & The Political Aspirations of Goans
Under Portuguese Colonialism*

Iona Loyola Nazareth, Mount Royal, Quebec

The Legend of Reyes Magos

John Hobgood, Chicago State Univ

DISCUSSANT: Albertino Norona, Univ of Chicago

Session 51 Room 227, Wisconsin Center

BANGLADESH & HER BIG NEIGHBORS

CHAIR: Zillur R. Khan, Univ of Wis-Oshkosh

Bangladesh & India: Big Power-Small Neighbor Relationship

Minoo Adenwalla, Lawrence Univ

Bangladesh & Pakistan: A Case of Realignment

Syed Bashir Hussain, Univ of Wis-Oshkosh

Bangladesh & The People's Republic of China

Zillur R. Khan, Univ of Wis-Oshkosh

DISCUSSANTS: David Chang, Univ of Wis-Oshkosh & Yasmin

Begum, Indiana Univ of Pennsylvania & Daud Majlis

Khan, Voice of America

Session 52 Room 224, Wisconsin Center

CONTEMPORARY PAKISTAN: PROBLEMS & PROSPECTS

CHAIR: S. Razi Wasti, Columbia Univ

Richard English, Organizer, Columbia Univ

Patterns of Agricultural Development in Pakistan:

Trends, Problems & Prospects

Rafiq Ahmad, Islamia Univ

Islam in Pakistan: Some Recent Trends

Waheed uz Zaman, Institute of History & Culture,

Islamabad

Islamization - The Historical Dimension

Sharif al Mujahid, Quaid-e-Azam Academy, Karachi

DISCUSSANT: Hakim Mohammed Said, Hamdard Foundation

Sunday 10:15 panel sessions continued on next page—

SUNDAY MORNING, NOVEMBER 4

10:15 a.m. to 12:00 noon

Session 53 Room 212, Wisconsin Center

GEOGRAPHICAL PATTERNS IN SOUTH ASIA

CHAIR: Gopal Kuikarni, Indiana Univ of Penn

*The Urban & Marketing System In Interior Tamilnadu
In the Immediate Pre-Colonial Period*

Brian J. Murton, Univ of Hawaii

*Changing Status of Women in India: An Aspect of
Social Change*

Meera Schoen, Ball State Univ

Urbanization in Kathmandu Valley: A Historical Perspective

Mohan Shrestha, Bowling Green State Univ

Pattern of Service Use in Rural India

Sudhir Wanmali, International Food Policy Research
Institute, Washington, D.C.

DISCUSSANT: Surendra P. Mathur, Alabama A&M Univ

Session 54 Room 316, Wisconsin Center

**TRADITIONAL MUSIC IN TWENTIETH CENTURY CONTEXTS: SOUTH &
SOUTHEAST ASIA**

CHAIR: R. Anderson Sutton, Univ of Wis-Madison

*Musicians in Context: Group Structure & Dynamics in a
Contemporary Javanese Setting*

Roger R. Vetter, Univ of Wis-Madison

*The Impact of Commercial Cassette Recording on
Javanese Music*

R. Anderson Sutton, Univ of Wis-Madison

*Dadra: Commercialization & Classicization of a
Folk Music Genre in the Twentieth Century*

Peter Manuel, Madison, Wis.

DISCUSSANT: Lois Anderson, Univ of Wis-Madison

Session 55 Room 138, Wisconsin Center

**THE SOUTH ASIAN LANDSCAPE: A SERIES OF SELECTED
RECENT RESEARCH TOPICS, PART VI**

CHAIR: Bina Gupta, Univ of Missouri-Columbia

10:20 *Small Towns & Elite Formation in India*

Janet E. Benson, Kansas State Univ

10:45 *Soldier-Scholar to Academic-Warrior: The Indian*

Researches & English Career of Sir Richard Carnac Temple

Charles Morrison, Michigan State Univ

11:10 *Who are the Dravidians? Implications of Recent Findings*

Andree F. Sjoberg, Univ of Texas-Austin

11:35 *The United States & Nehru, 1947-1964*

Robert J. McMahon, Univ of Florida

SUNDAY MORNING, NOVEMBER 4

10:15 a.m. to 1:00 p.m.

Session 56 Lower Lounge, Lowell Hall

**INVESTMENT FOR WATER RESOURCES DEVELOPMENT BY RURAL PEOPLE
IN THE HILLS OF NEPAL**

CHAIR: David Holmberg, Cornell Univ

*Time-Tested Technologies for Irrigation in Nepal: Himalayan
Folk Engineering Success, Limitations & Possible Extension*

Robert Yoder, Cornell Univ

*Indigenous Water Users' Group for Irrigation Management
in Nepal*

Edward Martin, Cornell Univ

Local Capabilities & Limitations: A Case of

Drinking Water Movement in Rural Nepal

Harihar Acharya, Cornell Univ

Water as Property: Its Ramifications

Ujjwal Pradhan, Cornell Univ

DISCUSSANT: Henry Hart, Univ of Wis-Madison (Emeritus)

Session 57 Room 426, Lowell Hall

**ROUNDTABLE/WORKSHOP: THE PRACTICAL ART OF LITERARY
TRANSLATION**

CHAIR: Hank Heifetz, Univ of Wis-Madison

This roundtable/workshop will be concerned with practical issues related to the literary quality of translations from South Asian languages. Those actively involved in translation should select one particular problem of interest (semantic or formal) & bring a brief illustration, preferably copied for distribution in the workshop. This should consist of a short poem or brief passage or prose in the original language, together with a word-by-word literal translation & a more polished "literary" translation. General discussions will be held on the various questions raised. All interested participants are welcome to attend.

Sunday morning panel sessions continued on next page—

SUNDAY MORNING, NOVEMBER 4

10:15 a.m. to 1:00 p.m.

Session 58 Room B-1, Lowell Hall

GANDHARAN ART & ICONOGRAPHY: THE ART OF PAKISTAN'S PESHAWAR VALLEY & RELATED AREAS

CHAIR: John C. Huntington, Ohio State Univ

The Wisdom-Diadem

Carolyn W. Schmidt, Ohio State Univ

The Wreath-bearing Bodhisattva in Gandharan Art

Yu-min Lee, Ohio State Univ

An Unknown Mudra in Gandharan Art

Martha Carter, Madison, Wis.

Break

Some Interesting Figures of Herakles in Gandharan Art

Joan Raducha, Univ of Wis-Madison

The Samalaji Sculptures: Assumptions of Gandharan Influence & Their Implications

Sara Schastok, Evanston, Ill.

New Discoveries in Swat: Excavations by the Univ of Peshawar

F. A. Durrani, Univ of Peshawar

The Evidence for Tantra in Gandharan Art

John C. Huntington, Ohio State Univ

Session 59 Room 118, Lowell Hall

THREE VILLAGES PAST & PRESENT: TOTAGADDE, KHALAPUR & KARIMPUR

CHAIR: Bernard S. Cohn, Univ of Chicago

Totagadde--Past & Present Images

Louise G. Harper, Washington, D.C.

HAM GARIBI LOG.: The New 'Poor' in Karimpur

Bruce W. Derr, Syracuse Univ

Status of Women in Khalapur

Pauline Kolenda, Univ of Houston

Break

*A Study of the Effects of Social Change on Depression Among**Havik Brahman Women in A South India Village*

Helen Ullrich, Univ of North Carolina Medical School

*She is Called 'The Village Indira': The Life Story of a**Karimpur Widow*

Susan S. Wadley, Syracuse Univ

Shifting Patterns of Employment: Khalapur 1954-1984

Michael Mahar, Univ of Arizona

DISCUSSANTS: Bernard S. Cohn, Univ of Chicago &

Murray J. Leaf, Univ of Texas-Dallas

SUNDAY AFTERNOON, NOVEMBER 4 1:00 p.m.**CONFERENCE ADJOURNMENT**

Plan now to attend the 14th Annual Conference on South Asia, November 1, 2 & 3, 1985. Deadline for paper or panel proposals is May 1, 1985. Contact the Conference Coordinator, Wisconsin South Asian Area Center, for further details.

INDEX OF PANELS

AFGHANISTAN UPDATE: THE REFUGEES & THE RESISTANCE (Thomas E. Gouttierre, Chr.)	p. 23
APPROACHES TO NEPALI CULTURAL HISTORY (A. W. Hanson-Barber, Chr.)	p. 16
BANGLADESH & HER BIG NEIGHBORS (Zillur R. Khan, Chr.)	p. 37
BANGLADESH IN TRANSITION (Salim Rashid, Chr.)	p. 17
BUSINESS CLIMATE IN INDIA (Harish Batra, Chr.)	p. 31
CHANGING DIVISION OF LABOR IN SOUTH ASIA, SESSION I: THE NEW TECHNOLOGIES (James W. Bjorkman, Chr.)	p. 10
CHANGING DIVISION OF LABOR IN SOUTH ASIA, SESSION II: PARTICIPATORY DEVELOPMENT (Kusum Nair, Chr.)	p. 10
CHANGING DIVISION OF LABOR IN SOUTH ASIA, SESSION III: SOCIAL CHANGE (T. Scarlett Epstein, Chr.)	pp. 11 & 12
CHANGING DIVISION OF LABOR IN SOUTH ASIA, SESSION IV: FUNDAMENTALISM (James W. Bjorkman, Chr.)	pp. 11, 16, 18
CLASSICAL MUSIC & DANCE PERFORMANCE: (Christopher & Marni Wieser Ris)	p. 35
CONTEMPORARY PAKISTAN: PROBLEMS & PROSPECTS (S. Razi Wasti, Chr.)	p. 37
DANCE PRESENTATION: Parul Shah	p. 14
DEATH, WOMEN & REGENERATION IN THE HINDU WORLD (Frederique A. Marglin, Chr.)	p. 26
EAST INDIA COMPANY STUDIES (Iqbal Singh, Chr.)	p. 34
ETHNICITY, TRANS-NATIONAL, & SUB-NATIONAL CONFLICTS IN SOUTH ASIA (Karen Eide Rawling, Chr.)	p. 18
ETHNOSOCIOLOGY & RELATED APPROACHES TO INDIAN CULTURE (Michael Moffatt, Chr.)	p. 12
EXPERIMENTS IN ISLAMIC INSTITUTION BUILDING IN PAKISTAN (Rafiq Ahmad, Chr.)	p. 16
FEATURED SPEAKER: AMBASSADOR K. S. BAJPAI OF INDIA	p. 28
FILM SCREENING: Mani Kaul's Film <i>Sataha Sa Uthata Admi</i>	p. 27
GANDHARAN ART & ICONOGRAPHY: THE ART OF PAKISTAN'S PESHAWAR VALLEY & RELATED AREAS (John C. Huntington, Chr.)	p. 40
GEOGRAPHICAL PATTERNS IN SOUTH ASIA (Gopal Kulkarni, Chr.)	p. 38
GOAN SUBCULTURE IN INDIA, THE (John Hobgood, Chr.)	p. 37
HINDU-MUSLIM INTERACTION IN INDIA (C.M. Naim, Chr.)	p. 34
INDO-ISLAMIC CITY, THE (Gavin R.G. Hambly, Chr.)	p. 26
INFORMATIONAL ROLE OF MASS MEDIA IN THE SOUTH ASIAN NATIONS (Joseph E. Elder, Chr.)	p. 33
INVESTMENT FOR WATER RESOURCES DEVELOPMENT BY RURAL PEOPLE IN THE HILLS OF NEPAL (David Holmberg, Chr.)	p. 39
INVITED LECTURE: GANANATH OBEYSEKERE	p. 20
KANNADA LYRICIST-MUSICIANS: KNOWN & UNKNOWN (H. K. Chandrasekhar, Chr.)	p. 33

INDEX OF PANELS CONTINUED—

LANGUAGE TEACHING PANEL: INNOVATIVE APPROACH TO THE TEACHING OF SOUTH ASIAN LANGUAGES (Paul W. Staneslow, Chr.)	p. 29
LITERATURES OF SOUTH ASIA: SYMPOSIUM ON THE LESS KNOWN (Narendra K. Sinha, Chr.)	p. 13
MAN, ENVIRONMENT LAND & POWER IN RAJASTHAN (John F. Richards, Chr.)	p. 26
MODERN SCIENCE IN THE ASIAN CONTEXT (Raj Mohan, Chr.)	p. 32
NISKAMA KARMA (S. S. Rama Rao Pappu, Chr.)	p. 29
OUTLOOK FOR EDUCATION IN NEPAL, THE (Hugh B. Wood, Chr.)	p. 23
PAKISTAN IN WORLD POLITICS DURING THE 1980's (S. S. Nyang, Chr.)	p. 32
POTENTIAL OF AFGHANISTAN'S SOCIETY & INSTITUTIONS TO RESIST SOVIET DOMINATION, THE (Leon Poullada, Chr.)	p. 30
PRACTICAL ART OF LITERARY TRANSLATION, THE: ROUNDTABLE WORKSHOP (Hank Heifetz, Chr.)	p. 39
PRACTICE OF RITUAL & PERFORMANCE IN SOUTH ASIA, THE (James Moy, Chr.)	p. 13
PRESS AMID CONFLICTING NATIONAL LOYALTIES, THE (Ainslee T. Embree, Chr.)	p. 19
QUESTIONS OF FORM IN INDIAN CINEMA (Mira Reym Binford & Satti Khanna, Co-Chr.)	p. 24
RITUAL, SOCIETY & SYMBOL IN NEPAL (Kathryn March, Chr.)	p. 32
SLIDE LECTURE: PRINCES, ARTISANS, & ARCHITECTS: COLONIAL BUILDING IN PRINCELY INDIA, 1850-1930 (Thomas R. Metcalf, Presenter)	p. 14
SOCIAL HISTORY & RELATIONS OF MONEY IN SOUTH ASIA, WORKSHOP ON THE, PART I (Nicholas B. Dirks & Stewart Gordon, Co-Chr.)	p. 17
SOCIAL HISTORY & RELATIONS OF MONEY IN SOUTH ASIA, WORKSHOP ON THE, PART II (Nicholas B. Dirks & Stewart Gordon, Co-Chr.)	p. 19
SOCIAL MOVEMENTS IN PAKISTAN (Shahnaz J. Rouse, Chr.)	p. 25
SOUTH ASIA: FROM CONFLICT TO COOPERATION? ROUNDTABLE (Stephen P. Cohen, Chr.)	p. 27
SOUTH ASIAN LANDSCAPE, THE: A SERIES OF SELECTED RECENT RESEARCH TOPICS, PART I (Abbie Ziffren, Chr.)	p. 17
SOUTH ASIAN LANDSCAPE, THE: A SERIES OF SELECTED RECENT RESEARCH TOPICS, PART II (NEPAL) (Abbie Ziffren, Chr.)	p. 19
SOUTH ASIAN LANDSCAPE, THE: A SERIES OF SELECTED RECENT RESEARCH TOPICS, PART III (Manindra K. Mohapatra, Chr.)	p. 23

INDEX OF PANELS CONTINUED—

SOUTH ASIAN LANDSCAPE, THE: A SERIES OF SELECTED RECENT RESEARCH TOPICS, PART IV (Sauri P. Bhattacharya, Chr.)	p. 31
SOUTH ASIAN LANDSCAPE, THE: A SERIES OF SELECTED RECENT RESEARCH TOPICS, PART V (William H. H. Cranmer, Chr.)	p. 33
SOUTH ASIAN LANDSCAPE, THE: A SERIES OF SELECTED RECENT RESEARCH TOPICS, PART V (Bina Gupta, Chr.)	p. 38
SYMBOLIC TREATMENT OF WOMEN: CURRENT RESEARCH ON SOUTH ASIA (Jyotsna Vaid, Chr.)	p. 30
TEACHING WORKSHOP: CLASSROOM EXCURSIONS TO SOUTH ASIA: 'VISITING' INDIA BY READING NOVELS & PREPARING TRAVEL PLANS (Dorothie C. Shah, Chr.)	p. 25
TEACHING WORKSHOP: IMAGINATIVE APPROACHES TO SOUTH ASIA (Judi Benade, Chr.)	p. 18
TEACHING WORKSHOP: THE ROLE OF BENGALI WOMEN IN VILLAGE LIFE (Linda C. Layne, Chr.)	p. 22
TEXTS & TEXTUAL PRACTICES IN SOUTH ASIA (Vinay Dharwadker, Chr.)	p. 30
THEORY & SEGMENTED SOCIETY & STATE IN SOUTH INDIA, THE: CHALLENGES & REBUTTALS (Robert E. Frykenberg, Chr.)	p. 24
THREE MODERN INTERPRETERS OF HINDUISM: DO THEY BESPEAK A COHESIVE TRADITION? (Robert Baird, Chr.)	p. 22
THREE VILLAGES PAST & PRESENT: TOTAGADDE, KHALAPUR & KARIMPUR (Bernard S. Cohn, Chr.)	p. 40
TIBETAN SCHOLARS ON TIBETAN CULTURE, SOCIETY & RELIGION: IN COMMEMORATION OF 25 YEARS IN EXILE, PART I (Jeanette Snyder, Chr.)	p. 22
TIBETAN SCHOLARS ON TIBETAN CULTURE, SOCIETY & RELIGION: PART II (Geshe Sopa, Chr.)	p. 25
TRADITIONAL MUSIC IN TWENTIETH CENTURY CONTEXTS: SOUTH & SOUTHEAST ASIA (R. Anderson Sutton, Chr.)	p. 38
VALUES & VISIONS IN SRI LANKA: PRACTICE & PERFORMANCE (James Warner Bjorkman, Chr.)	p. 29
VOCAL PERFORMANCE: Manindra K. Verma	p. 36
WHO (WHAT) CONTROLS THE SPIRITS: SOUTH ASIAN SPIRIT POSSESSION RITUALS AS PERFORMANCES, PART I (Diane Coccari, Chr.)	p. 16
WHO (WHAT) CONTROLS THE SPIRITS: SOUTH ASIAN SPIRIT POSSESSION RITUALS AS PERFORMANCES, PART II (Diane Coccari, Chr.)	p. 18

INDEX OF PARTICIPANTS

Abbas, Qaisar	p.33	Coutinno, Veressimo	p.37
Acharya, Harihar	p.39	Cranmer, William H. H.	p.33
Acharya, Meena	pp.11,23	Crisler, Larry	p.17
Adams, John	p.10	Crowell, Lorenzo M., Jr.	p.34
Adams, R. E.	p.19	Derr, Bruce W.	p.40
		Desai, Niranjan	pp.27,34
Adenwalla, Minoo	p.37	Deshpande, Shekhar	p.33
Ahmad, Aijaz	p.25	De Silva, Kingsley	p.11
Ahmad, Aqueil	p.32	Dharwadker, Vinay	p.30
Ahmad, Mumtaz	pp.11,16,32	Dimock, Edward	p.30
Ahmad, Rafiq	pp.16,37	Dirks, Nicholas B.	pp.12,17,19
Amin, Tahir	p.32	Donaldson, Thomas	p.33
Anderson, Lois	p.38	Dornecker, Larry	p.23
Arif, Mohammad	p.16	Durrani, F. A.	p.40
Asher, Catherine B.	p.26	Edwards, David	p.23
Ayeen, Ghulam Ali	p.30	Egnor, Peggy	p.12
Babu, B. Ramesh	pp.24,27		
Bahl, Kali Charan	p.13	Elder, Joseph	pp.18,33
Baird, Robert	p.22	Ellingson, Terry	pp.13,22
Bajpai, K. S.	p.28	Emadi, Hafizullah	p.23
Baral, Lok Raj	p.27		
Barrier, N. G.	p.19	Embree, Ainslee	p.19
Bashir, Elena	p.17	Emigh, John	p.13
Bastian, David	p.29	English, Richard	pp.16,37
Batra, Harish	p.31	Epstein, T. Scarlett	pp.10,11,12
Begum, Yasmin	p.37	Erndt, Kathy	p.18
Benade, Judi	p.18	Farr, Grant	p.23
Benson, Janet E.	p.38	Flemming, Leslie	p.24
Bhagla, S. P.	p.31	Fox, Richard	p.24
Bhandari, Bishnu	p.17	Frykenberg, Robert E.	pp.11,24,34
Bhargava, Ashok	p.31	Gadon, Elinor	p.23
Bhatt, B. J.	p.31	George, Ivy	p.23
Bhattacharya, Sauri P.	p.31	Gold, Ann G.	p.18
Binford, Mira Reym	p.24	Goonatilleka, Miguel H.	p.29
Bjorkman, James W.	pp.10,11,29	Gordon, Stewart	pp.17,19
Blackburn, Stuart	p.13	Gouttierre, Thomas E.	pp.23,30
Blake, Stephen	p.26	Graham, Jack W.	p.23
Brand, Michael	p.26	Gulzad, Sultan	p.18
Breckenridge, Carol	p.17	Gupta, Bina	p.38
Canfield, Robert	p.23	Hambly, Gavin R. G.	p.26
Carter, Martha	p.40	Hanson, Todd C.	p.32
Chakraborty, Amalendu K.	p.34	Hanson-Barber, A. W.	p.16
Chandrasekhar, H. K.	p.33	Harper, Louise G.	p.40
Chandrasekhar, Shiva	p.33	Hart, Henry	p.39
Chandrasekhara Rao, RVR	p.27		
Chang, David	p.37	Hashmi, Bilal	p.25
Chatterjee, Dipankar	p.29	Haynes, Edward S.	p.26
Chitnis, S. G.	p.27		
Clark, Grace	p.16	Heifetz, Hank	p.39
Claus, Peter	p.16	Hein, Owen	p.25
Coccarri, Diane	pp.16,18	Henderson, Carol	p.26
Cohn, Bernard S.	p.40	Hertel, Bradley	p.18
Cohen, Stephen P.	p.27	Hiltebeitel, Alf	p.26
Cooke, M. T.	p.19	Hirschmann, Edwin	p.19
Courtright, Paul	p.26	Hobgood, John	p.37

INDEX OF PARTICIPANTS CONTINUED -

Holmberg, David	p.43	Manuel, Peter	p.38
Hoque, Kazi Sadrul	p.17	March, Kathryn	p.32
Hoque, Monzurul	p.17	Marglin, Frederique A.	p.26
Hoissain, Najmul	p.17	Marriott, McKim	p.12
Houshower, James	p.29	Martin, Edward	p.39
Huda, Shamsul	p.17	Mathur, Kuldeep	p.10
Huddleston, Jack R.	p.29	Mathur, Surendra P.	p.38
Huntington, John C.	p.40	McBride-Limaye, Ann	p.31
Hussain, Syed Bashir	p.37	McHugh, Ernestine	p.30
Illtis, Linda	p.13	McMahon, Robert J.	p.38
Israel, Milton	p.19	Memon, Muhammad Umar	p.1
Jaafi, Naveed-i-Rahat	p.11	Mendez, Jesus	p.31
Jahan, Sarwar	p.17	Michie, Aruna	p.26
Jain, Nirmala	p.31	Michie, Barry	pp.10,26
Jesudasan, Melba	p.18	Miller, Barbara Stoler	p.30
Jha, Prabhakar	p.13	Miller, Beatrice	p.25
Jones, Kenneth	p.11	Miller, Joan	p.12
Kaiwar, Vasant	p.25	Minor, Robert N.	p.22
Kalayil, Ann	p.18	Mitra, Priti Kumar	p.31
Kamrany, Nake	p.36	Moffatt, Michael	p.12
Kapferer, Bruce	p.13	Mohapatra, Manindra K.	p.23
Kassebaum, Gayathri	p.33	Mohan, Raj P.	p.32
Kemp, Sharon	p.11	Moore, Melinda	p.12
Kepley, Vance	p.24	Moreno, Manuel	p.12
Khan, Daud Majlis	p.37	Morrison, Charles	p.38
Khan, Haroon	p.17	Moy, James	p.13
Khan, Zillur R.	p.37	Mujahid, Sharif Al	pp.3,32
Khanna, Satti	p.24	Mumford, Stanley	p.32
Kolenda, Pauline	p.40	Mundschenk, Paul	p.22
Kulkarni, Gopal	p.38	Murthy, D.	p.24
Kumar, Nita	p.18	Murton, Brian J.	pp.19,38
Kurin, Richard	p.12	Naidu, G. M.	p.31
Lateef, Shahida	p.11		
Lawrence, Bruce B.	p.34	Naim, C. M.	p.34
Layne, Linda	p.22	Nair, Kusum	p.10
Leaf, Murray J.	p.40	Nazareth, Iona Loyola	p.37
Lee, Yu-Min	p.40	Neff, Deborah	p.18
Leuschner, W. A.	p.19	Newell, Richard	p.30
Lewis, Todd T.	p.16	Nimbark, Ashakant	p.33
Liebl, Maureen	pp.27,34	Niyogi, Puspa	p.33
Lodrick, Daryck O.	p.26	Norbu, Thubten J.	p.22
Lorton, Ronald D.	p.23	Nyang, Sulayman S.	p.32
Lowry, Glenn	p.26	Nuri, S. H.	p.27
Luthra, Rashmi	p.30	Obeyesekere, Gananath	pp.18,20,26
Madan, T. N.	p.26	Pach, Alfred	p.16
Mahar, Michael	p.40	Palat, Ravi Arvind	p.24
Mahtab, Nazmunnessa	p.23	Panditharatne, B. L.	p.29
Majeed, Akhtar	p.18	Pappu, S. S. Rama Rao	p.29
Makeig, Douglas C.	p.23	Parker, Barbara	p.32
Malik, Riaz	p.25	Patel, Jashu	p.19
Mansingh, Surjit	p.10	Paul, Linda	p.10

INDEX OF PARTICIPANTS CONTINUED --

Peck, Jennifer	p.25	Sharma, S.U.S.	p.31
Perlin, Frank	p.19	Sharma, Shankar	p.19
Pigg, Stacy	p.32		
Poullada, Leon	p.30	Shorish, Mobin	p.30
Prabhakar, Bellue S.	p.33	Shrestha, Mohan	p.38
Pradhan, Dale	p.39	Siddhalingiah, Gaitesberg	p.33
Pradhan, Krishna	pp.3,13	Siegel, Lee A.	p.23
Prakash, Ved	p.29	Simon, Beth	p.16
Prasai, Seanza	p.23	Singh, Iqbal	p.34
Pray, Bruce R.	p.23	Sinha, Narendra K.	p.13
Pugh, Judy	p.12	Sjoberg, Andree F.	p.38
		Snyder, Jeanette	pp.13,22
Raducha, Joan	p.40	Sopa, Geshe	p.25
Raheja, Gloria	p.12	Southall, Aiden	p.24
Rahula, Telwatte	p.29	Staneslow, Paul W.	p.29
Ram, Alur Janaki	p.17	Stanley, John	p.18
Rao, Chandrasekhara, RVR	p.27	Stein, Burton	pp.17,24,34
Rao, Malathi	p.17	Stevens, Mervin E.	p.19
Rao, V. Narayana	p.30	Subramaniam, V.	p.29
Rashid, Salim	p.17	Sijapati, Krishna	p.33
Rawling, Karen Elde	p.18	Suleman, Saieha	p.30
Riaz, Tariq	p.33	Suryanarayan, Indu	p.33
Richards, John F.	pp.17,26	Sutton, R. Anderson	p.38
Ris, Christopher	p.35	Takla, Tenzing	p.25
Ris, Marni Wieser	p.35	Tethong, Tenzin	p.22
Roseberry, James Royal	p.34	Thomas, Raju G. C.	p.27
Rosen, George	p.10	Tikku, G. L.	p.13
Rossiter, Angie	p.22	Tsarong, Paljor	pp.22,25
Rouse, Shahnaz J.	p.25	Tucker, Richard P.	p.26
Rudner, David	p.19	Ullrich, Helen	p.40
Rudolph, Lloyd	p.10	Vaid, Jyotsna	p.30
Safford, Joshua	p.25	Vaidik, V. P.	p.23
Said, Hakim Mohammed	p.37	Vaidya, Ramesh	p.19
Sandberg, Karl	p.29	Vajracharya, Gautam	p.16
Schastok, Sara	p.40	Valentine, Tamara	p.30
Schechner, Richard	p.13	Varma, Ravindra	p.33
Schlesinger, Lee	pp.12,19	Vatuk, Sylvia	p.11
Schmidt, Carolyn W.	p.40	Verma, Manindra K.	pp.13,36
Schoen, Meera	p.38	Vetter, Roger R.	p.38
Schomer, Karine	p.13	Vohra, Deepak	p.33
Sebastian, Joseph	p.25		
Shah, Dorothe	p.25	Wadley, Susan S.	p.40
Shah, Mehar Hussein	p.25	Wagle, N.	p.34
Shah, Parul	p.14	Wahid, Siddiq	p.25
Shakabpa, Tsepon W.D.	p.22	Wallace, Paul	p.11
Sharma, Arvind	p.34	Wanmali, Sudhir	p.38
Sharma, Madhav	p.23	Washbrook, David	p.19

INDEX OF PARTICIPANTS CONTINUED --

Wasti, S. Razi	p.37	Wood, Hugh B.	p.23
Weiss, Anita	p.17	Yadegari, Mohammad	p.16
Wilke, Arthur	p.32	Yoder, Robert	p.39
Willis, Patrick A.	p.31	Zaman, Waheed Uz	p.37
Wilson, Boyd H.	p.22	Zarrilli, Phillip B.	p.13
Wilson, Frances	p. 1	Zide, Norman H.	p.13
		Ziffren, Abbie	pp.17,18

For information about the programs, resources, and facilities of the South Asian Area Center and the Department of South Asian Studies, write:

SOUTH ASIAN STUDIES
University of Wisconsin
1242 Van Hise Hall
Madison, Wisconsin 53706
Phone 608/262-3012

ABOUT THE COVER.....

The photo from Rajasthan, India on the cover of this brochure was part of an exhibit, "From India With Photographs", by Arvind Garg, at the 12th Annual Conference on South Asia which was held in November 1983 on the campus of the University of Wisconsin-Madison.

Arvind Garg, who is moving to New York City this fall, first came to Madison in 1976 to study for a PhD degree in English Literature, but soon his interest changed to photography which he has practiced constantly since 1978. In 1982-83 he made a special six month trip to India to travel and photograph extensively the people and life in his home country. In spring of 1984, with funding by Wisconsin Humanities Committee, Arvind gave several slide and talk shows on India in the Madison area. A feature on his black and white photographs was published in the June 1984 issue of *Wisconsin Academy Review*.

A limited edition portfolio of Arvind Garg's Indian photos is available for private and public collections. For information please contact Judy Patterson, Conference Office, South Asian Area Center, 1236 Van Hise Hall, University of Wisconsin, Madison, WI 53706, phone 608/262-3384.

Cover designed by V.N. Rao.

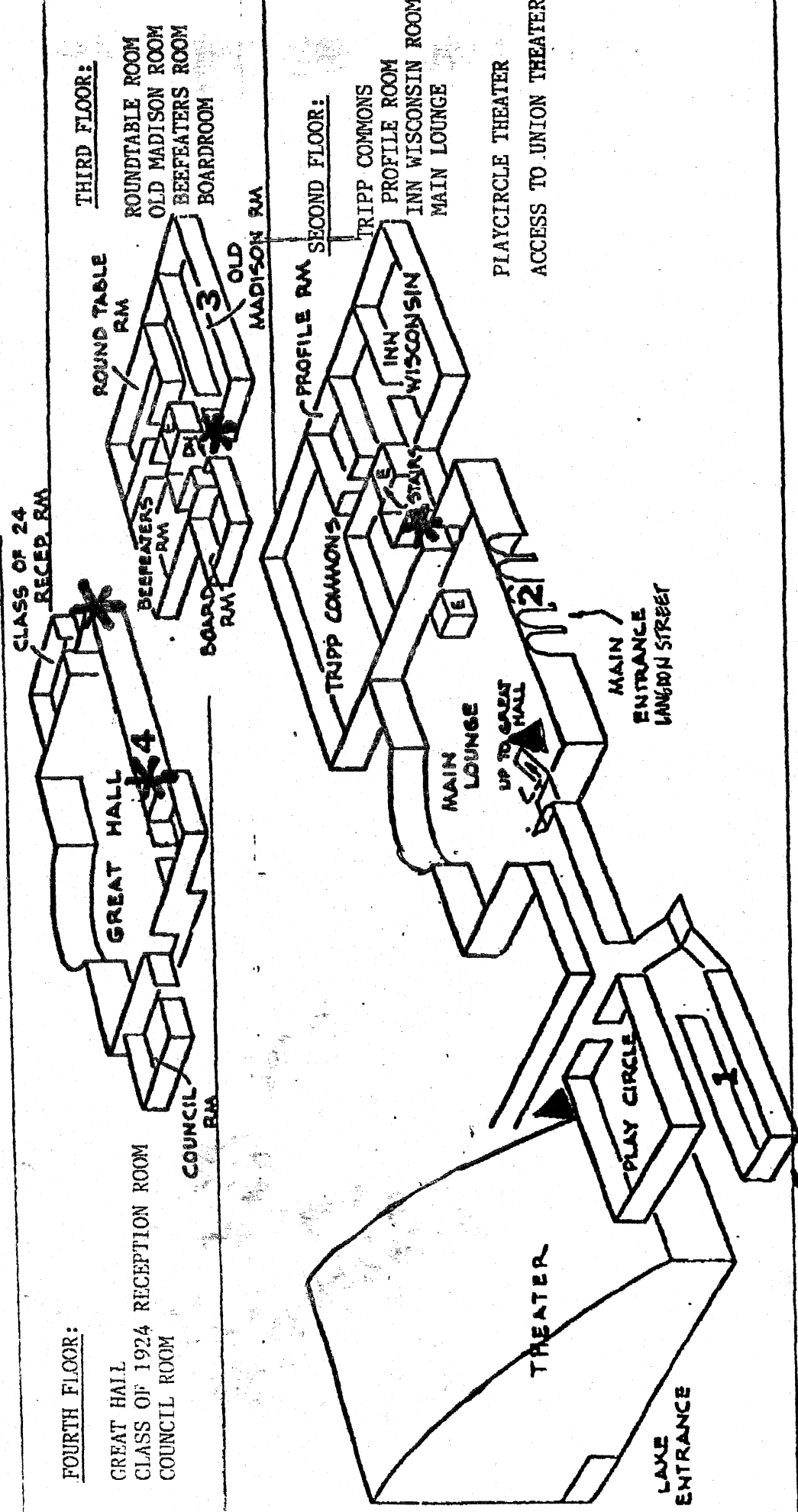
* * *

With many thanks to the Staff of the Department of South Asian Studies and to our many student volunteers, all of whom help to make this Conference a success.

☎ = PAY PHONE/PHONES

✿ = RESTROOMS

MEMORIAL UNION MEETING FACILITIES



FOURTH FLOOR:

- GREAT HALL
- CLASS OF 1924 RECEPTION ROOM
- COUNCIL ROOM

THIRD FLOOR:

- ROUND TABLE ROOM
- OLD MADISON ROOM
- BEEFEATERS ROOM
- BOARDROOM

SECOND FLOOR:

- TRIPP COMMONS
- PROFILE ROOM
- INN WISCONSIN ROOM
- MAIN LOUNGE

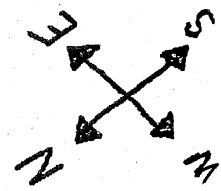
FIRST FLOOR:

- LAKEFRONT CAFETERIA
- RATHSKELLIER
- UNION DELI
- INFORMATION DESK
- PAUL BUNYAN ROOM

TO LAKEFRONT CAFETERIA

TO RATHSKELLIER

TO BUNYAN ROOM



PAUL BUNYAN